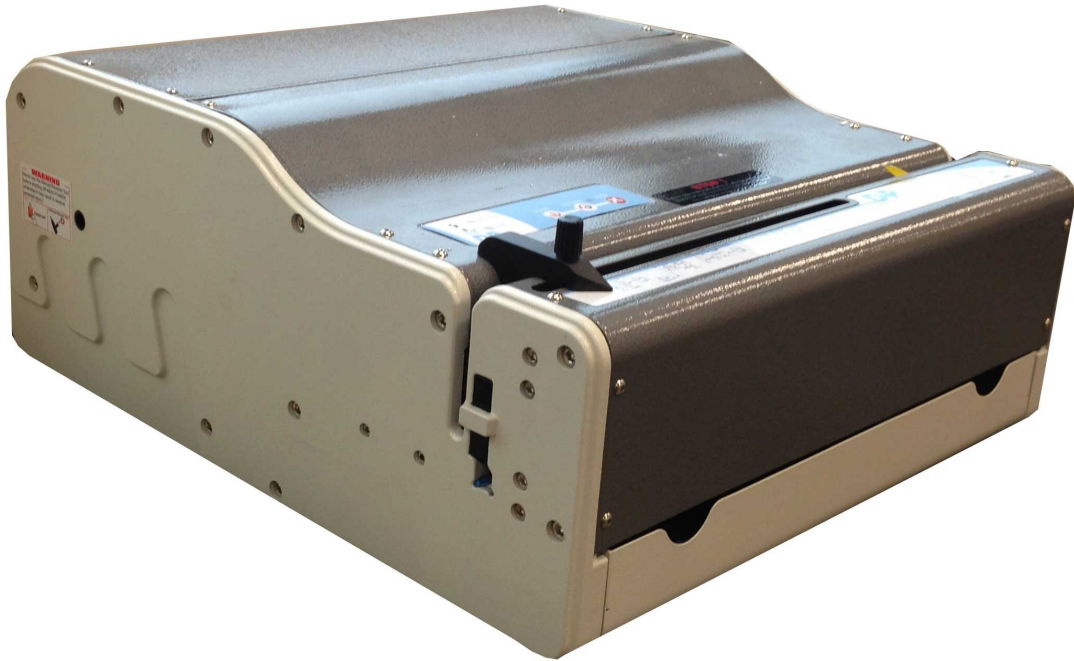


Diamond Punch

Electric Punch with Changeable Dies

With more power and more versatility than any other binding punch in its class, the DP is one of the most productive punches on the market today. With a maximum punching capacity of up to 55 sheets at a time, easy-to-use interchangeable die feature, and efficient modular design, DP is compatible with commercial volume workloads in all binding styles.



Product Summary

Elegant Design with Robust all Alloy Case
Quick Die Change Over System
Easy Vertical Sheet Insertion
Punching Throat with Open Ended Design
Depth Margin Adjustable At 2, 3, 4 or 5mm
Max. Punching Thickness: 35 sheets of 80gsm
12 Sheets of 0.15mm A-pet Film
Single Punching Width Up to 14 h (356mm)
Electrical Anti-Jam Features
Additional Mechanical Anti-jam Device
Safety Interlock for Die Clamping
ED Panel
Heavy Duty Motor for Non-stop Punching
Foot Pedal or Push Button Operation

Single Punch Capacity

(based on 80gsm bond paper)

3 - Hole 55 sheets.
Coil 4:1 (Oval/Round) 55 sheets.
Wire 3:1 (Square/Round) 35 sheets.
Wire 2:1 (Rectangular/Round) 35 sheets.
Comb 35 sheets

Specifications

Weight: 49kg.
Dimensions 266mm x 457mm x 521mm.
Power Supply AC230V, 50HZ